

The only Hepatic Hemodynamic system

Analysis of Specific Hepatic Pressures & Gradients

The Horizon XVu offers a variety of cardiac and peripheral catheterization modalities.

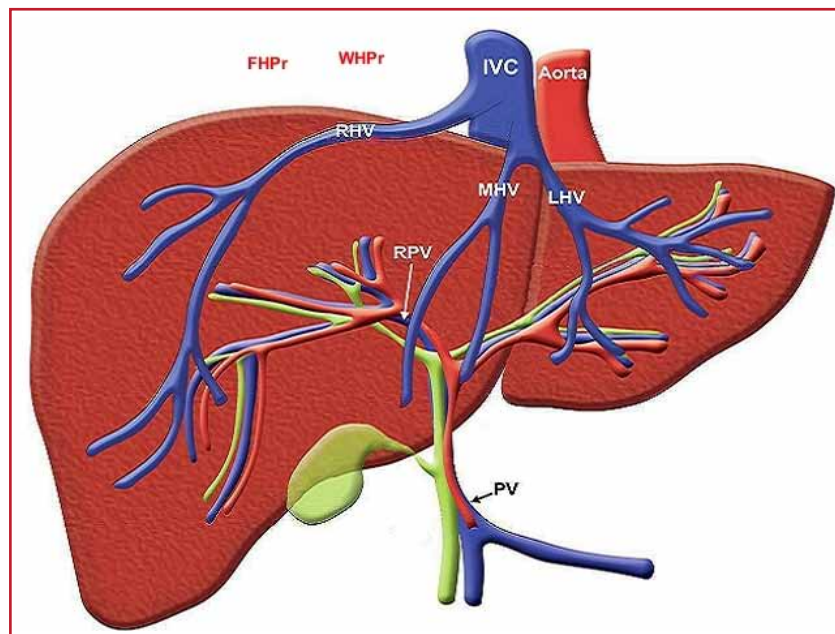
The Hepatic catheterization option is additional to all standard and optional modalities of the Horizon XVu.

- A clear diagram of the hepatic vessels on the technician screen makes annotation and visual orientation easy. The values measured by the system are annotated on the diagram for reference during the procedure and are summarized in the final report.
- All waveforms can be analyzed, and the gradient (HVPg) is calculated by the system.
- All waveforms and analyses are saved to full disclosure for future reference.
- On the hepatic diagram each of the veins is marked.

The following are the default sites: LHV > Left Hepatic Vein

RHV > Right Hepatic Vein

MHP > Middle Hepatic Vein



The system allows to measure mean pressures and wedge pressures and their gradients in the various sites.

The different pressures are marked as:

FHPr	>	Free Right Hepatic Vein Pressure
FHPr Prox	>	Free Right Hepatic Vein Pressure
WHPr	>	Right Hepatic Vein Wedge Pressure
FHPm	>	Free Middle Hepatic Pressure
WHPm	>	Middle Hepatic Vein Wedge Pressure
FHPI	>	Free Left Hepatic Pressure
WHPI	>	Left Hepatic Vein Wedge Pressure
PAP	>	Pulmonary Artery Pressure
PCP	>	Pulmonary Capillary Wedge Pressure

Note: The user may add, replace or modify sites on the liver diagram

The system allows also to measure and display Mean gradients between free hepatic pressures and the wedge pressures.

Mean gradients are calculated between:

- WHPr – FHPr
- WHPr – FHPr Prox
- WHPm – FHPm

CFE Signal Acquisition Module

The CFE is Mennen Medical's proprietary innovative Front-End. Its exceptionally small size allows it to be rail mounted on the Procedure Table for maximum space saving utilization.

The CFE acquires patient vital sign data which includes:

- ECG
- Resp
- ICECG* (6 Ch)
- NIBP
- Invasive BP (4 Ch)
- End-Tidal CO2*
- SpO2
- Temperature (2 Ch)
- Cardiac Output

Easily accessed controls on the unit allow for In-Room Personnel to perform critical functions (zero BP; NIBP measurement, etc.).

***Optional**



* Eyal Ashkenazi, Yulia Kovalev and Eli Zuckerman- Evaluation and Treatment of Esophageal Varices in the Cirrhotic Patient, IMAJ • 2013, 15: 109-115

Israel: Mennen Medical Ltd.
6 Ha-Kishon Street, Yavne.
P.O. Box 102, Rehovot 7610002, Israel.
Phone: +972-8-9323333.
Fax: +972-8-9328510
www.mennenmedical.com

United States: Mennen Medical Corp.
290 Andrews Road, Feasterville-Trevoze, PA
19053-3480, USA.
Phone: +215 259-1020.
Fax: +215 357-2010
www.mennenmedical.com

United Kingdom: Charter Kontron Ltd.
Unit 18 Avant Business Center 21
Denbigh Road Milton Keynes MK1 1DT, UK.
Phone: +44 1908 646070.
Fax: +44 1908 646030
www.charter-kontron.com